



**GM**  
Series









GM Beige 60x60  
GM Beige 30x60





# GM

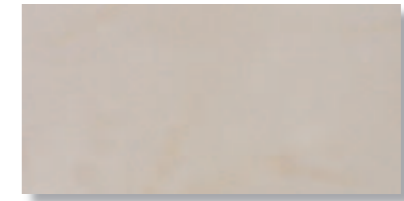
60x60 - 30x60

UNI EN 14411-G Bla  
Fine porcelain stoneware

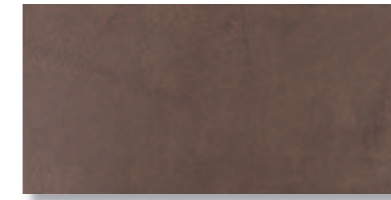
MARAZZI



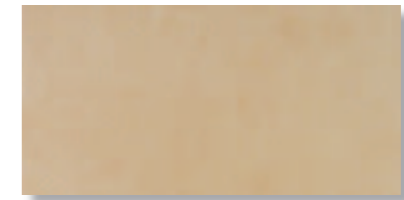
KXTQ GM Anthracite 30x60  
LF28 GM Anthracite 60x60



KXTR GM Grey 30x60  
LF27 GM Grey 60x60



L02Z GM Brown 30x60  
LF26 GM Brown 60x60



L02Y GM Beige 30x60  
LF25 GM Beige 60x60

SPECIAL TRIMS	SKIRTING 9,5x30	STEP 30x60
GM ANTHRACITE	KXXS	KXXT
GM GREY	KXXU	KXXV
GM BEIGE	KXXW	KXXX
GM BROWN	KXXY	KXXZ

### TECHNICAL FEATURES

	Testing method	Measurement unit	Established limits	GM SERIE Typical value	Reference standard
Water absorption in %	ISO 10545-3	%	≤ 0,5 Maximal single value 0,6	≤ 0,5	UNI EN 14411-G
Dimensions (A)	ISO 10545-2	%	Surface S (cm <sup>2</sup> ) > 410	Complies with the standards	UNI EN 14411-G
Length and width (B)		%	± 0,6	Complies with the standards	UNI EN 14411-G
Thickness		%	± 0,5	Complies with the standards	UNI EN 14411-G
Edge straightness		%	± 0,5	Complies with the standards	UNI EN 14411-G
Orthogonality		%	± 0,6	Complies with the standards	UNI EN 14411-G
Flatness		%	± 0,5	Complies with the standards	UNI EN 14411-G
Modul of Rupture	ISO 10545-4	N/mm <sup>2</sup>	≥ 35 N/mm <sup>2</sup> Minimum single value 32	45	UNI EN 14411-G
Frost Resistance	ISO 10545-12		Required	Resistant	UNI EN 14411-G
Thermal shock resistance	ISO 10545-9		Test method available	Resistant	UNI EN 14411-G

(A) Reference size 30x60.

(B) Allowed % difference of the average value, for each tile, from the production size.

Size (cm)	Thickness	Piece/Box	Sqm/Box	Kg/Box	Box/Pallet	Mq/Pallet	Kg/Pallet	Kg/Mq
30x60	10	6	1,08	24,44	44	47,52	1076	23
60x60	10	4	1,44	35,04	36	51,84	1261	24,33
Step	10	5	0,9	20,49	-			
Skirting	10	25	-	13,71	-			

GM Grey 60x60  
GM Brown 30x60

**MARAZZI** 

Marazzi Group S.p.A. Telefono  
+39 059 384111  
Fax  
+39 059 384303

Viale Virgilio, 30 www.marazzi.it  
41100 Modena E-mail  
Italia info@marazzi.it